

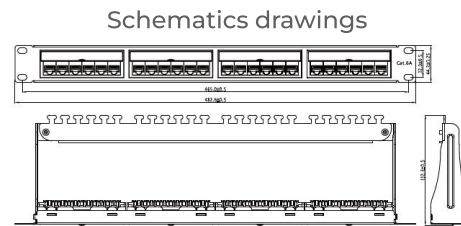
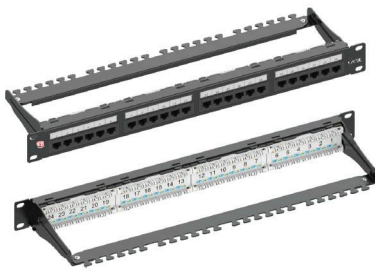


PATCH PANEL - LOADED

PRODUCT NO.: BC6UPP24L1

DESCRIPTION: CAT6 UTP 24Port Loaded Patch Panel

The KAYBE CAT6 UTP 24-Port Loaded Patch Panel ensures reliable and organized network connectivity for high-speed data transmission. Pre-loaded with CAT6-compliant ports, it provides seamless performance and easy cable management. Ideal for data centers, server rooms, and structured cabling systems.



PRODUCT ATTRIBUTES

- Utilizes Six-Port RJ45 Modules
- Includes ID Stripes For Easy Port Identification
- Facilitates Seamless Cable Routing Into Vertical Cable Managers
- Minimizes The Requirement For Horizontal Front Cable Management Bars

PRODUCT SPECIFICATIONS

Identification	I.D. Plate: PVC. Transparent Colour Paper
Panel	SPCC. 1.5 mm thickness with Black Colour painted Housing: PBT + GF,UL 94V-0
RJ45 Jack	Material: Phosphor Bronze with Nickel plated Finish: 50 micro-inch Gold plated over nickel plated
RJ45 Jack Contact	Housing: PC +GF,UL 94 V-2,Terminal: Phosphor Bronze with Tin plated ABS, UL 94V-0
IDC	SPCC,1.5mm thickness,painted in black

ELECTRICAL PARAMETERS

Current Rating	1.5 Amps
Insulation Resistance	≥ 500 MΩ
Contact Resistance	≤20 mΩ
DC Resistance	≤ 0.3 Ω
DC/AC Volt Endurance	DC1000V/AC750V 1min

MECHANICAL PARAMETERS

Mating cycles	750 cycles minimum
IDC mating cycles	200 cycles minimum
Operating temperature	-10~60°C
Operating humidity	10%~90%RH
Storage temperature	-40°C TO 68°C

PHYSICALS

Panel Frame	SPCC powder coating in black color
Plastic Parts	High quality engineering plastic
PCB	FR-4, 1.6mm Thickness
Jack Wire	0.35 mm Phosphor bronze gold over nickel plating
IDC conductor	0.5mm Phosphor bronze, tin-plating
Contact compatibility	accommodate 23 to 26 AWG solid
TIA Cat.6A Perm.Link Test	Worst Pair NEXT Headroom ≥ 2.0 dB

STANDARDS VERIFICATIONS

ANSI/TIA-568.2-D
ISO/IEC TR 11801-9901-2014
ISO/IEC 60603-7-41

ORDERING INFORMATION AS PER FOLLOWS

PART NO	DESCRIPTION	PACKAGING
BC6UPP24L1	CAT6 UTP 24Port Loaded Patch Panel	15pcs/ctn
BC6AUPP24L3	CAT6A UTP 24Port Loaded Patch Panel	10pcs/ctn